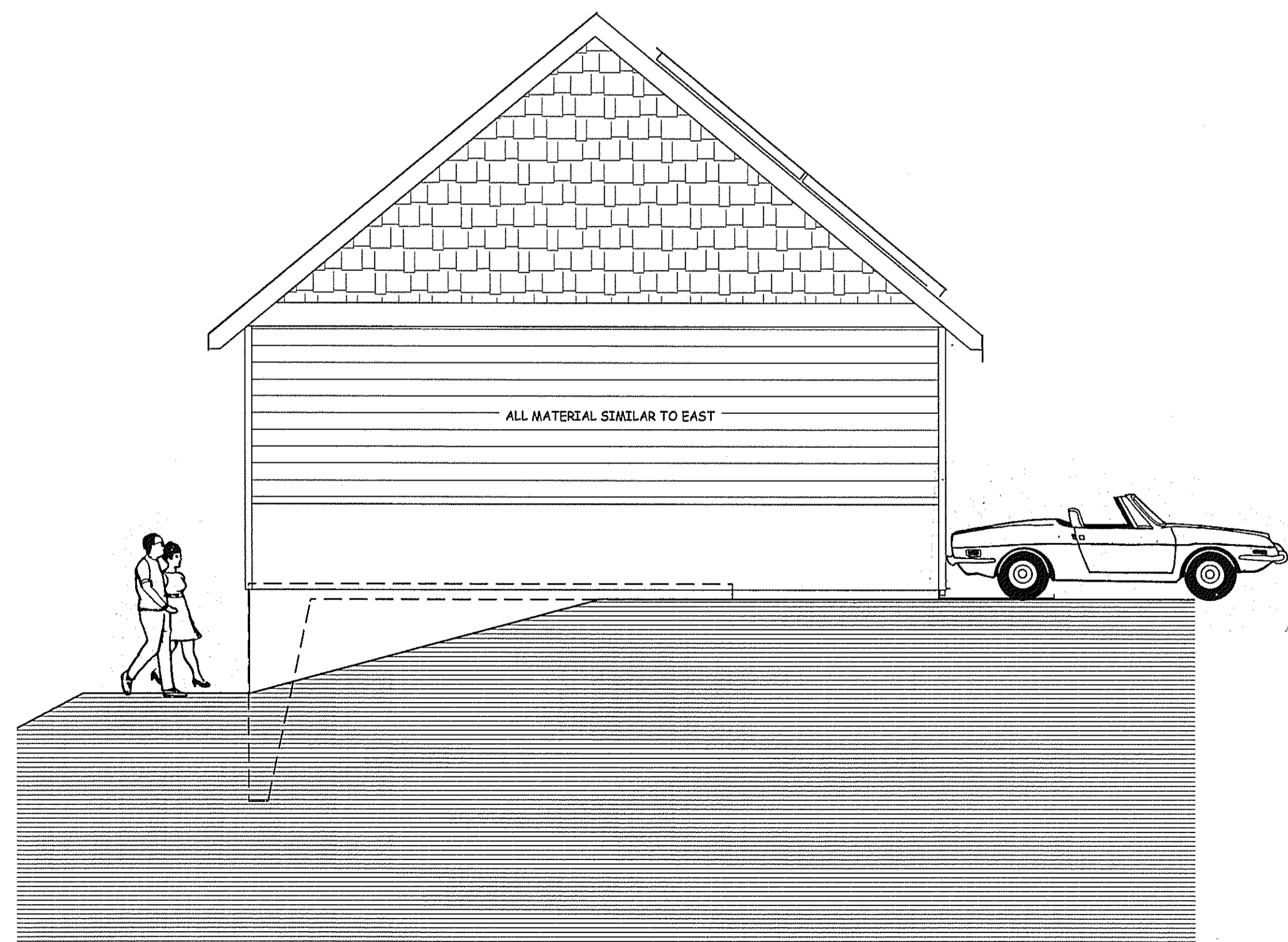


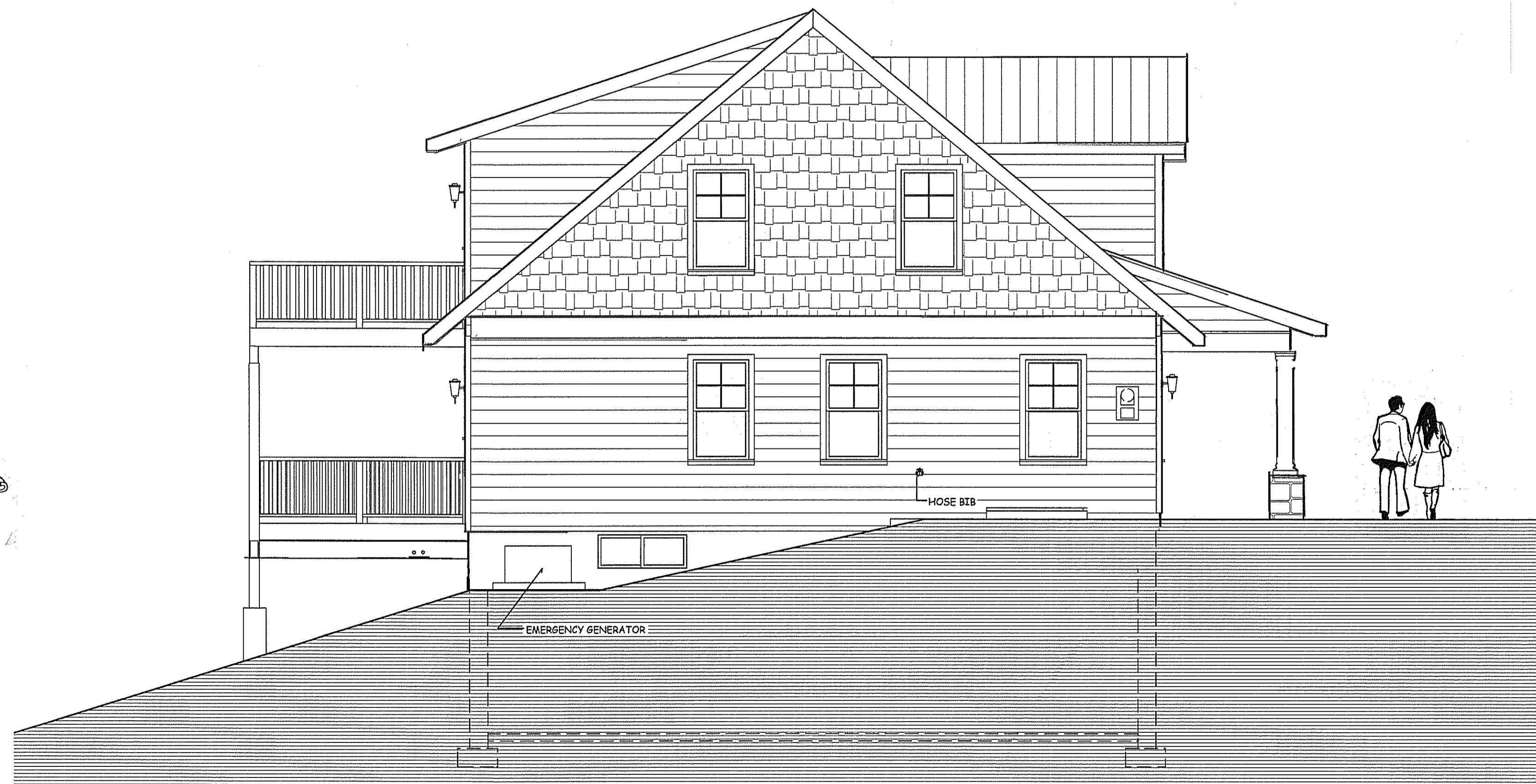
3
6 GARAGE: EAST FACING



4
6 HOUSE: EAST FACING ELEVATION



2
6 GARAGE: WEST FACING



1
6 HOUSE: WEST FACING ELEVATION

SCALE 1/4" = 1'-0"

REV. #	REVISION DESCRIPTION	DATE
1	START UP	FEB. 09, 2011
2	PRELIMINARY	NOV. 16, 2011
3	ESTIMATING & TRADE INPUT	DEC. 16, 2011
4	REVIEW	FEB. 06, 2012
5	FOR PERMITS	FEB. 20, 2012
6		JULY 12, 2012

ONLY VALID FOR PERMITS w/
EMBOSSSED SEAL & ORIGINAL
"RED" SIGNATURE

HOUSE & GARAGE ARE
BOTH PRESENTED IN
THIS SET OF
DRAWINGS
HOWEVER WILL BE
SEPARATE PROJECTS.

Eric C. Van Reed, Architect
Creative Design Associates, Inc.
ARCHITECTURE INTERIORS SITE & SPACE PLANNING
350 Calverhill Road
Chatham, PA 18814
Phone: 715.672.1155
www.ArchitectVision.com

NEW PRIVATE RESIDENCE
TAMARACK ROAD
NICHOLSON TWP, WYOMING CO., PENNSYLVANIA
DEED BOOK 162, PAGE 654, TAX ID # 79-0-50-0, 5.228 ACRES