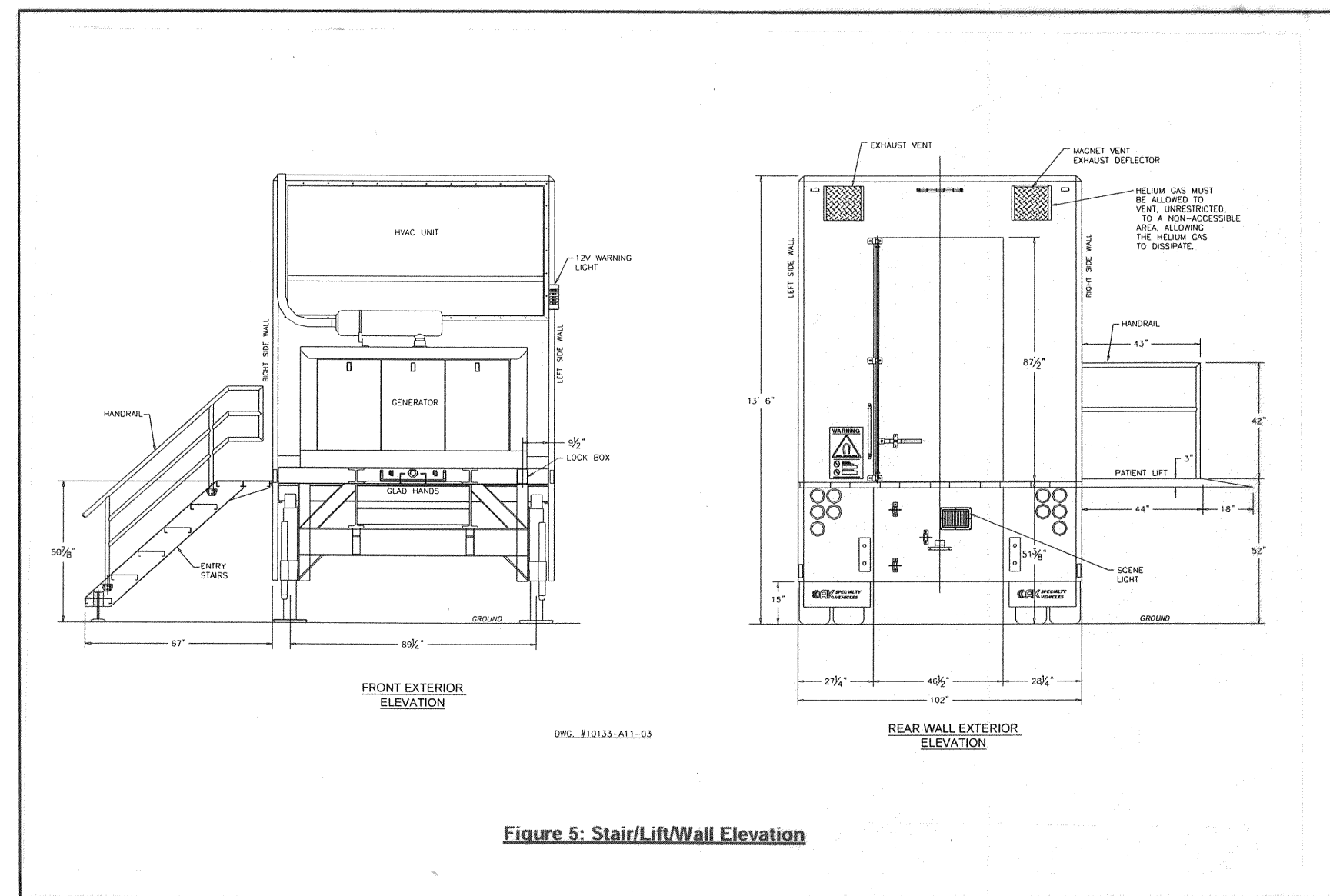


9
2

NOTES

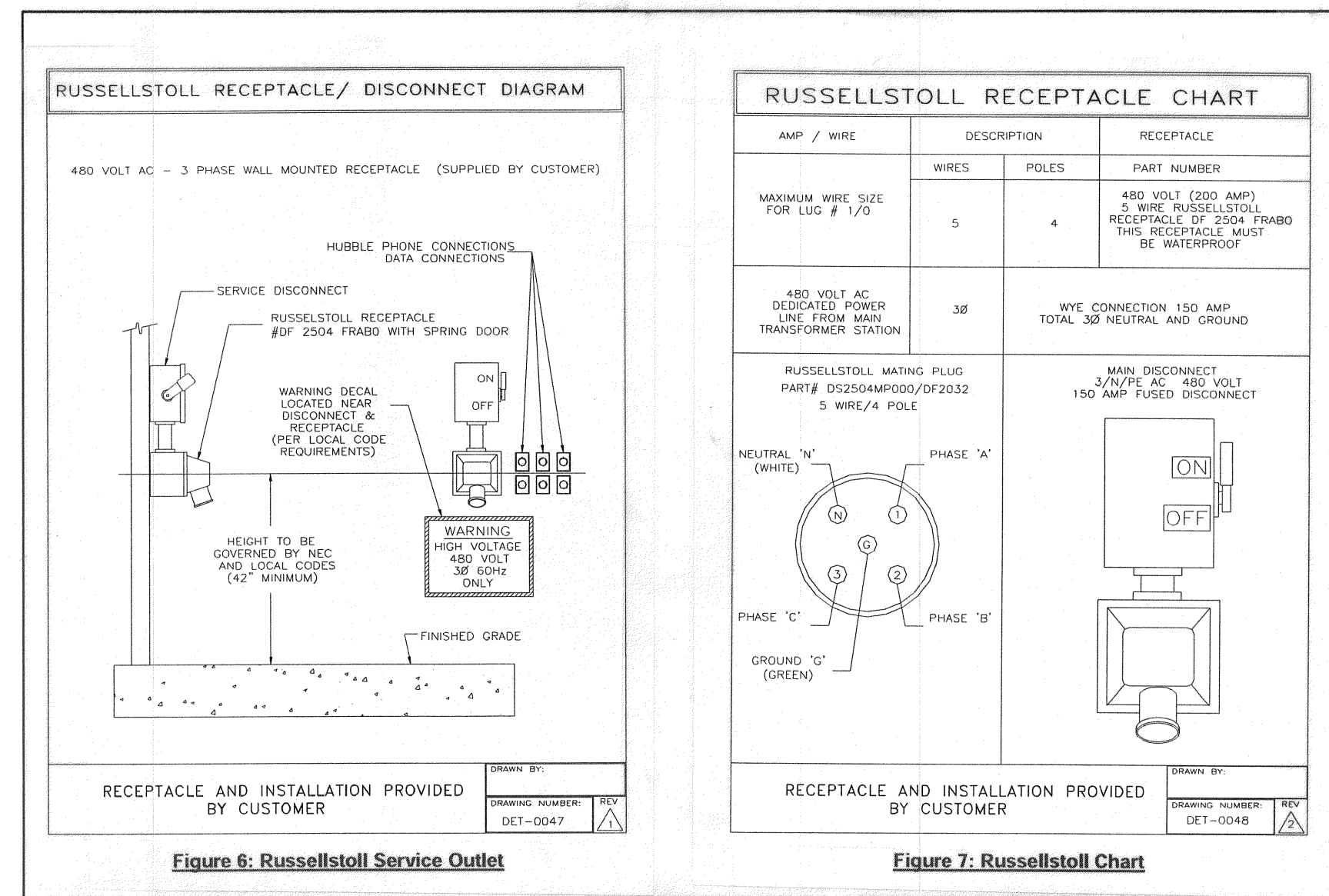
NO SCALE



6
2

TRAILER: STAIR & LIFT DETAILS

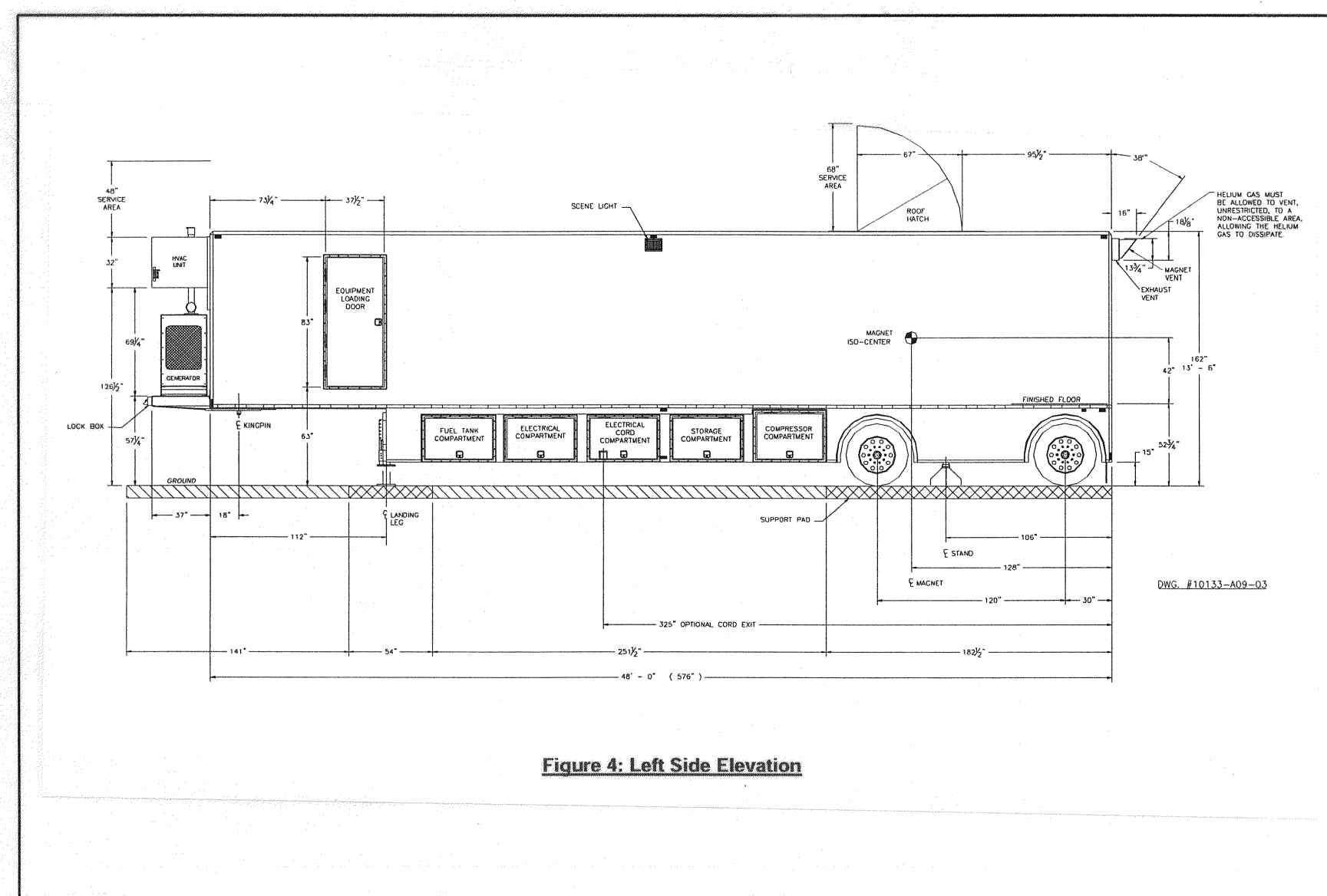
NO SCALE



3
2

ELECTRICAL DETAILS

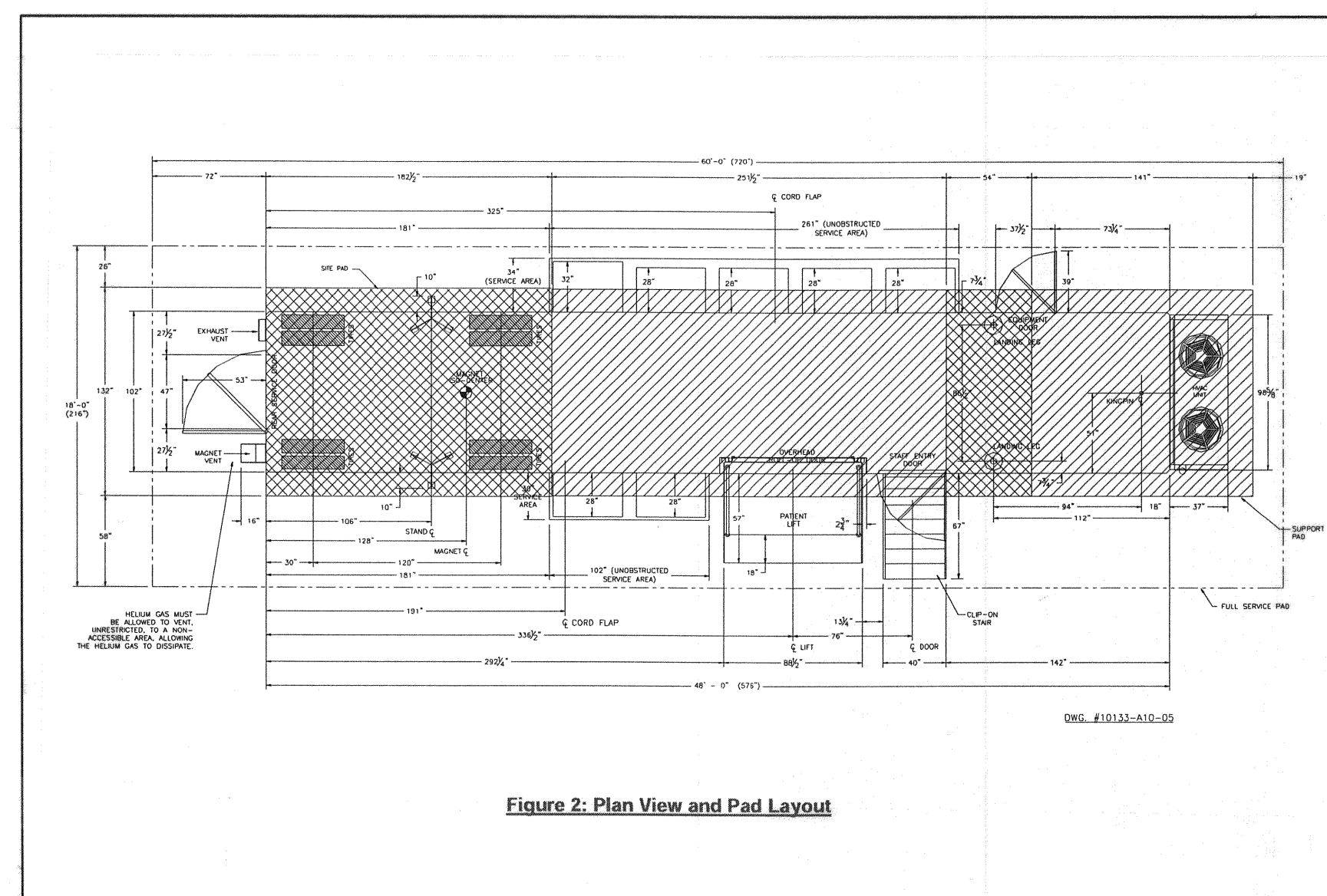
NO SCALE



8
2

TRAILER: LEFT SIDE ELEVATION

NO SCALE



5
2

TRAILER: PLAN & SUPPORT PAD

NO SCALE

GENERAL SCOPE OF WORK

- PROJECT IS PROVIDING AN ACCESS PATH, SUPPORT PAD AND ELECTRICAL CONNECTION FOR A MOBILE, TRAILER MOUNTED, MEDICAL MRI (MAGNETIC RESONANCE IMAGING) UNIT.
- THE PATH BETWEEN THE EXISTING FOREST HEALTH BUILDING AND THE TRAILER WILL BE WEATHER PROTECTED USING A PRE-ENGINEERED FABRIC STRUCTURE. ENCLOSURE IS NOT HEATED OR COOLED.
- THE TRAILER HAS A 50-FT. "EXTENSION CORD." FOREST HEALTH PROVIDES THE APPROPRIATE "SOCKET" MOUNTED ON THE BUILDING.

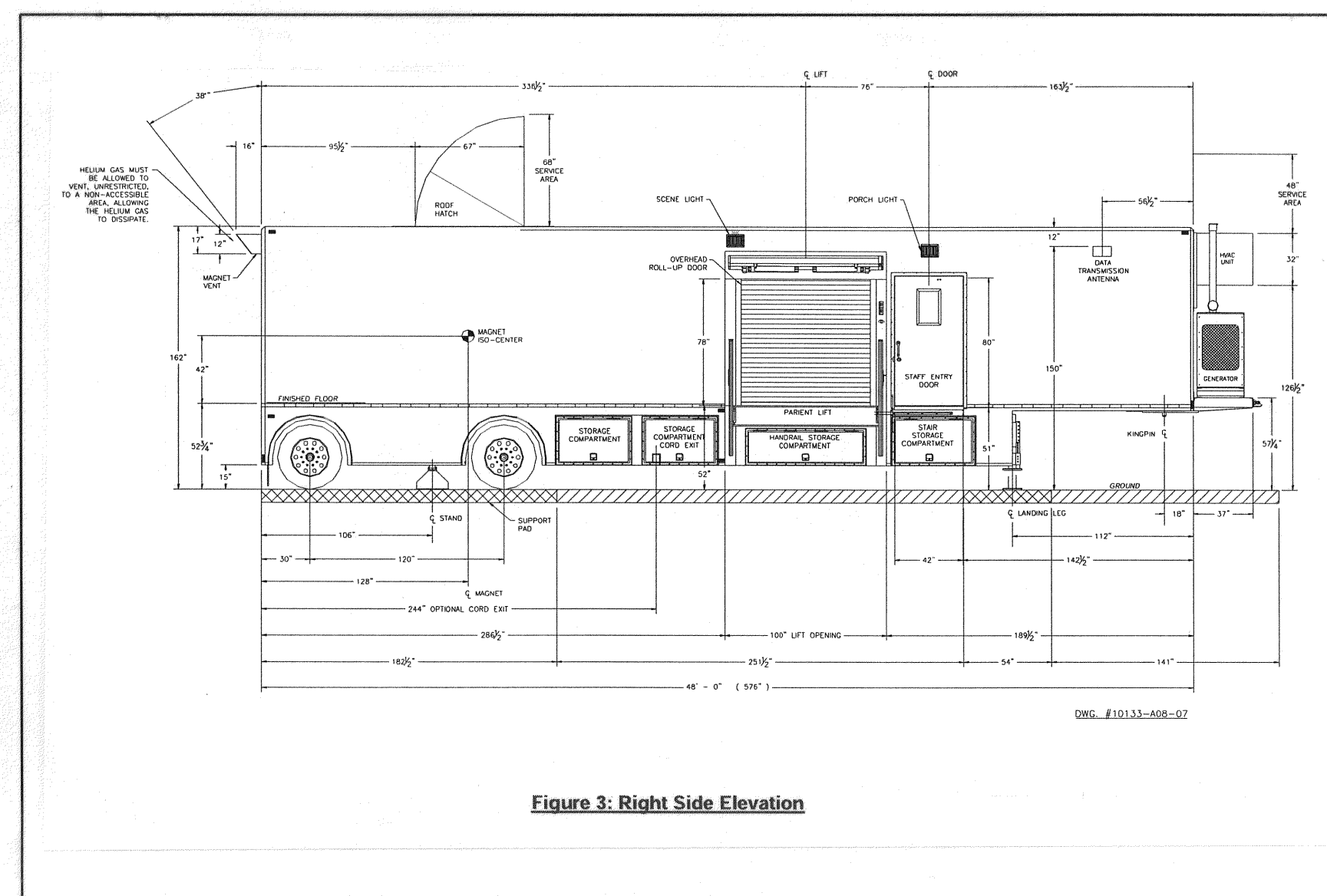
BACKGROUND INFORMATION:

- THE MRI UNIT IS MANUFACTURED BY GENERAL ELECTRIC (GE). THE TRAILER IS A COMPLETE ASSEMBLY FROM AK SPECIALTY VEHICLES. ASSEMBLY IS FULLY ADA ACCESSIBLE, STAND ALONE PACKAGE.
- THE MRI TRAILER IS AN EVALUATION UNIT, DEPLOYED TO DETERMINE IF SUFFICIENT MARKET CAN BE DEVELOPED JUSTIFYING A PERMANENT INVESTMENT AND CAPITAL INTERIOR IMPROVEMENTS TO THE MAIN BUILDING TO HOUSE THE TECHNOLOGY.
- THIS PROJECT DOES NOT ALTER THE TRAILER UNIT IN ANY WAY. FOREST HEALTH DOES NOT TAKE OWNERSHIP OF THE MRI TRAILER PACKAGE.
- THE MRI TRAILER STAFF ARE PART OF THE 'PACKAGE,' AND ARE NOT EMPLOYEES OF FOREST HEALTH.
- FOREST HEALTH MEDICAL CENTER PROVIDES ADMISSIONS, SCHEDULING, AND PATIENT COORDINATION. PATIENTS CHECK IN, ARE ESCORTED THROUGH THE BUILDING AND CONNECTING STRUCTURE, APPROXIMATELY 50 FEET FROM BUILDING TO THE ENTRANCE OF THE MRI TRAILER.
- RESTROOM FACILITIES ARE PROVIDED BY FOREST HEALTH IN THE EXISTING BUILDING.

2
2

GENERAL SCOPE OF WORK

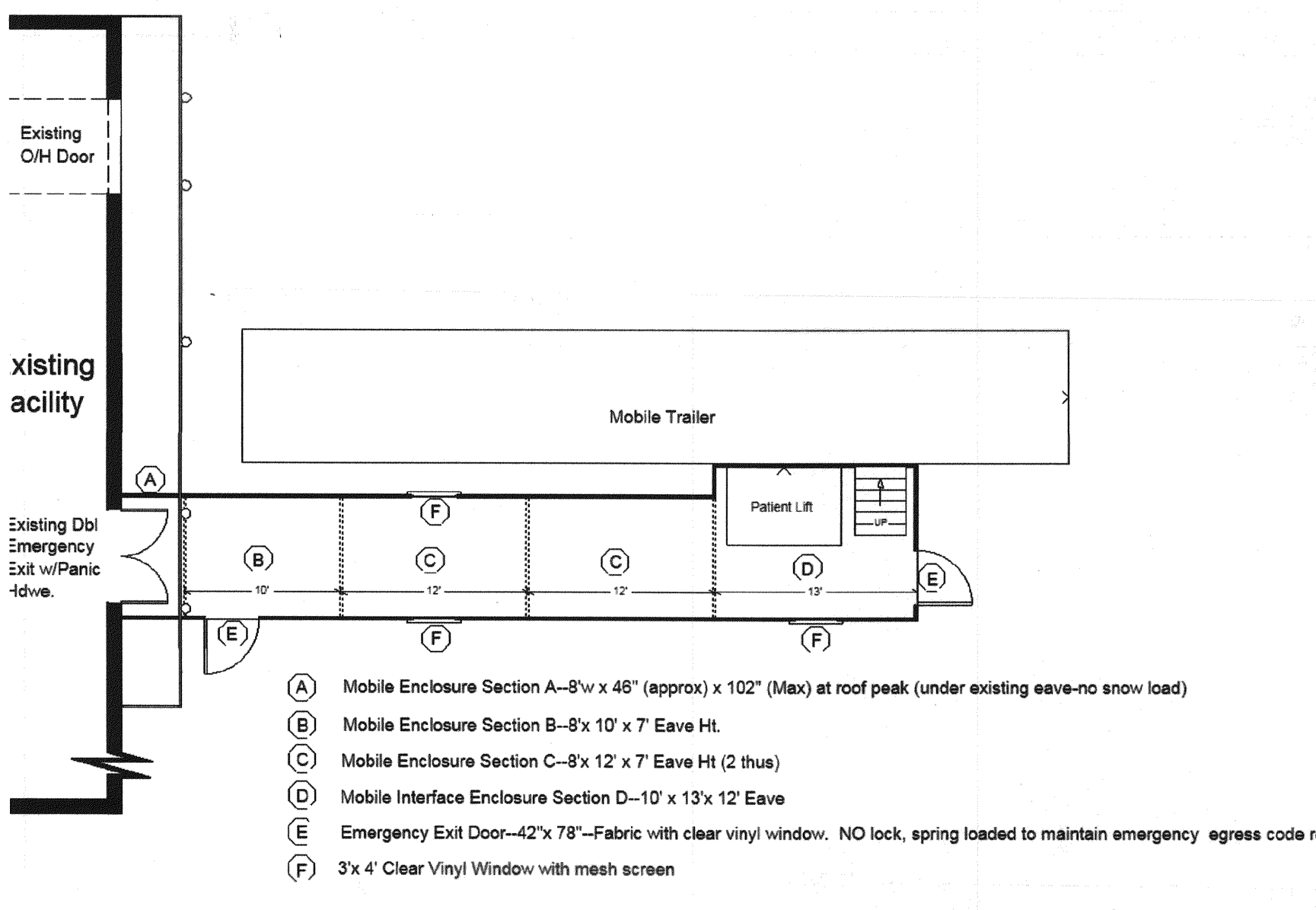
NO SCALE



7
2

TRAILER: RIGHT SIDE ELEVATION

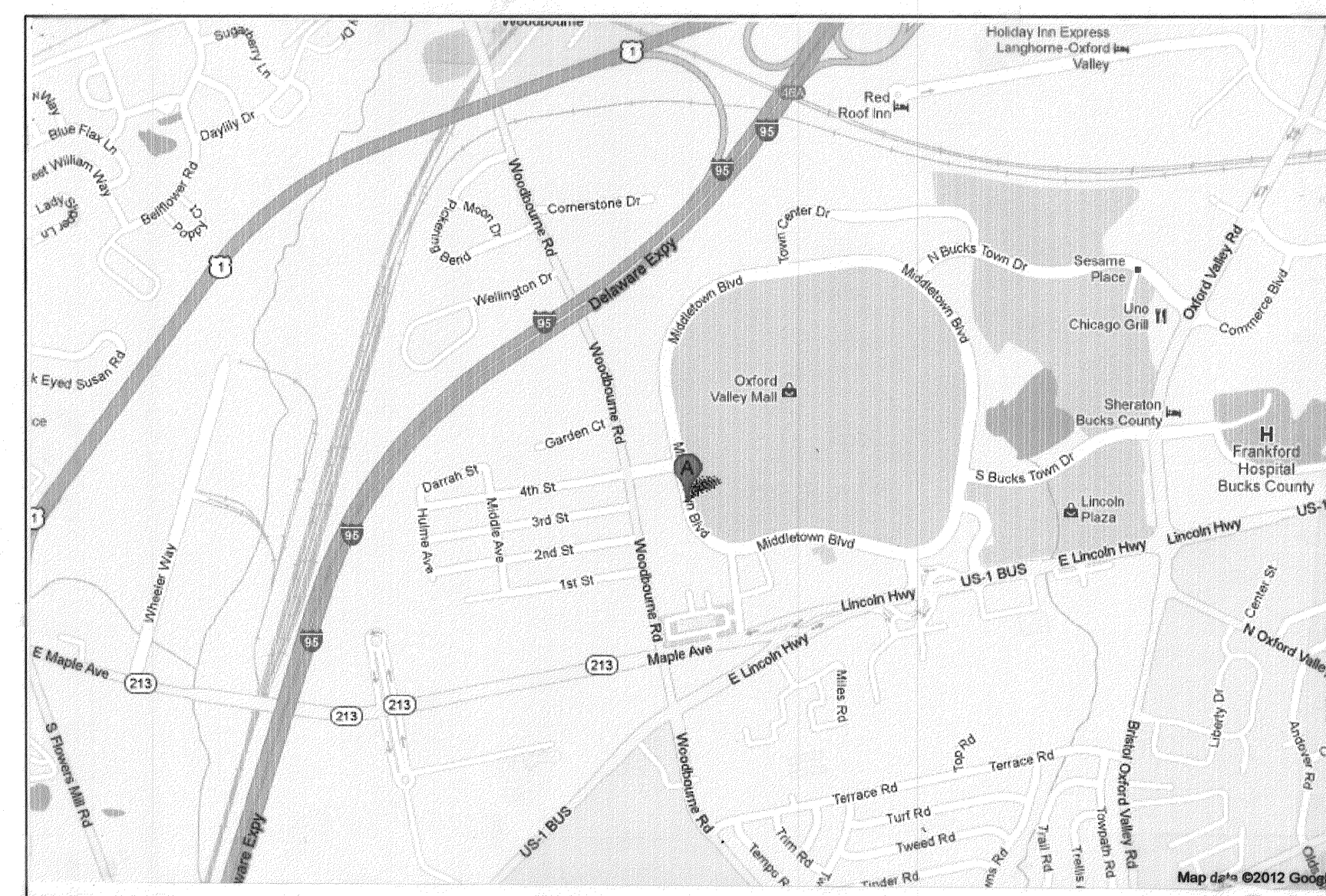
NO SCALE



4
2

FABRIC ENCLOSURE PLAN

NO SCALE



1
2

LOCATION PLAN

NO SCALE

REV. #	DATE	REVISION DESCRIPTION
01	06/30/2012	
02	06/14/2012	
03		
04		
05		
06		
07		
08		
09		
10		
11		
12		

ONLY VALID FOR PERMITS w/
EMBOSSER SEAL & ORIGINAL
'REDY' SIGNATURE

Eric C. Van Reed, Architect
Creative Design Associates, Inc.
 ARCHITECTURE INTERIORS SITE & SPACE PLANNING
 350 Callowhill Road
 Chalfont, PA 18914
 Voice: 215-672-1155
 www.creativevision.com
 NJ-21A09096100
 PA-PA080811X

280 MIDDLETOWN BLVD.
 CONNECTION TO "EVALUATION MRI" MEDICAL TRAILER
 MIDDLETOWN TOWNSHIP, BUCKS CO., PA

Sheet No.
2
 Comm. No.
 2012-2952 of 2